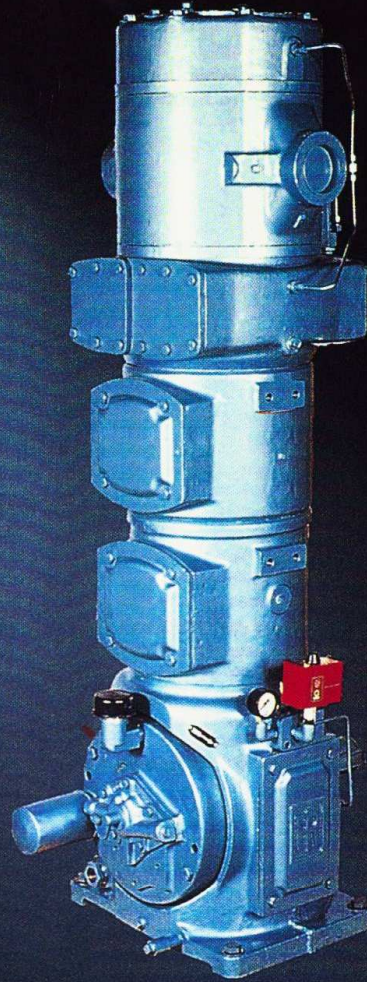




**Ingersoll Rand**

ESV/ESH Reciprocating, Water-Cooled, Air Compressors

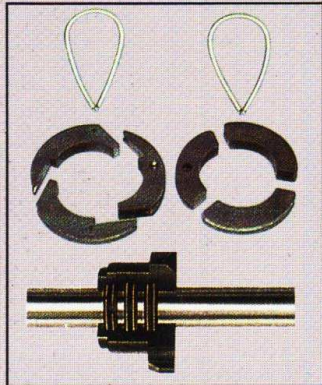


**Ingersoll Rand**

AIR SOLUTIONS

## Sectional view of ESV air compressor

Full floating, self adjusting packing rings



Rectangular, patented, air-cushioned channel valve with free air unloader



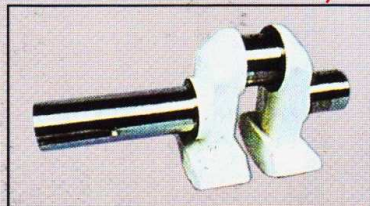
Die forged connecting rod, "split-bolting" type, with rifle drilled oil passage



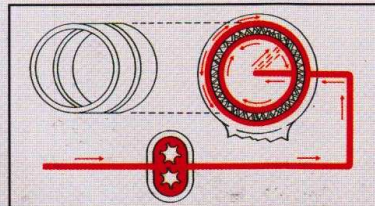
Crosshead, pin & bearing.



Die forged balanced crankshaft, with rifle drilled oil passage



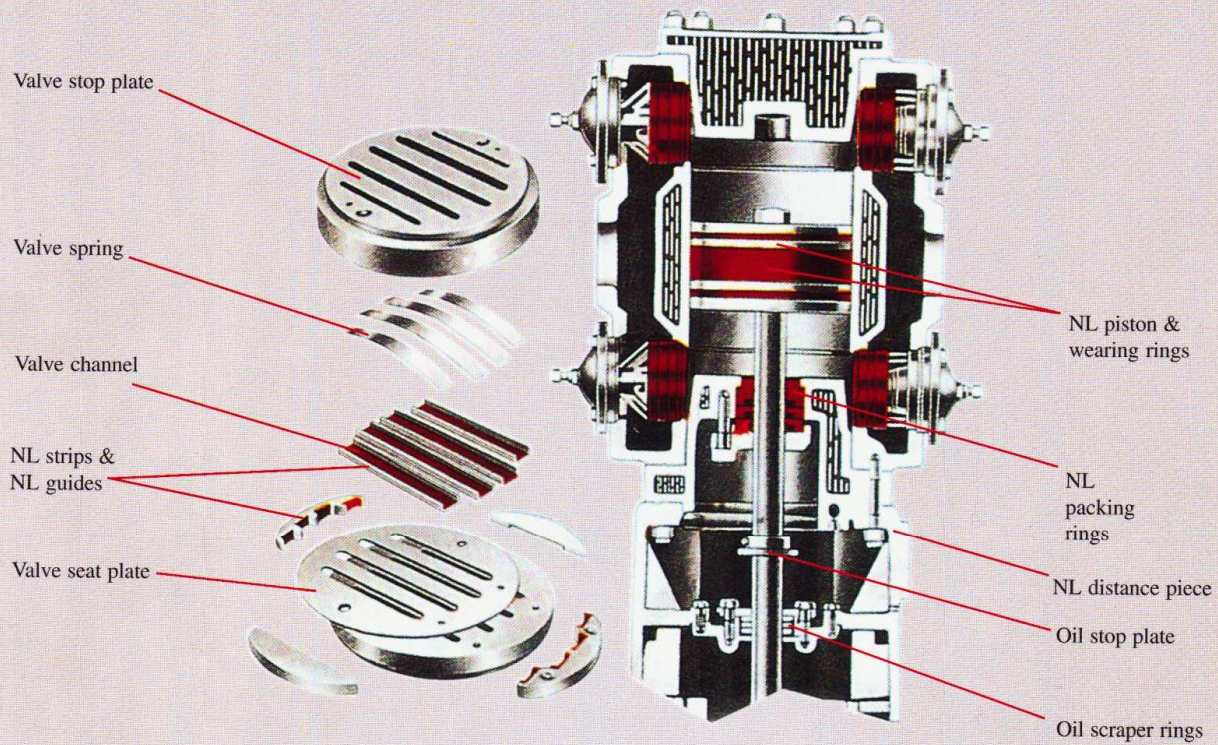
Bearings float in pressurized oil layers. Oil circulated by an internal gear pump driven through a pin attached to crankshaft



Full floating bearings



## Sectional view of NL design



Performance, Weights and Dimensions

ESV Range	Piston Displacement		Speed rpm	Working Pressure		Dimensions (mm)				Weight kgs
	m <sup>3</sup> /min	cfm		kg/cm <sup>2</sup> g	psig	Length	Width	Height Lub	Height NL	
7 x 5	4.65	164	750	8.80	125	524	560	1441	1738	620
8 x 5	6.10	215	750	7.00	100	524	560	1441	1738	681
9.5 x 5	7.78	274	675	4.20	60	572	560	1441	1738	718
8 x 7	7.36	260	650	9.50	135	524	730	1675	2023	840
9 x 7	9.33	330	650	7.70	110	572	730	1675	2023	840
11 x 7	14.10	498	650	7.70	100	632	730	1900	2249	1354
ESH Range										
12 x 7	16.74	546	600	3.15	45	2164	730	1009	1009	1396
14 x 7	21.07	744	600	2.45	35	2204	730	1132	1131	1633
16 x 7	27.55	973	600	1.40	20	2204	730	1265	1265	1750

ALWAYS USE GENUINE SPARES FOR BEST PERFORMANCE